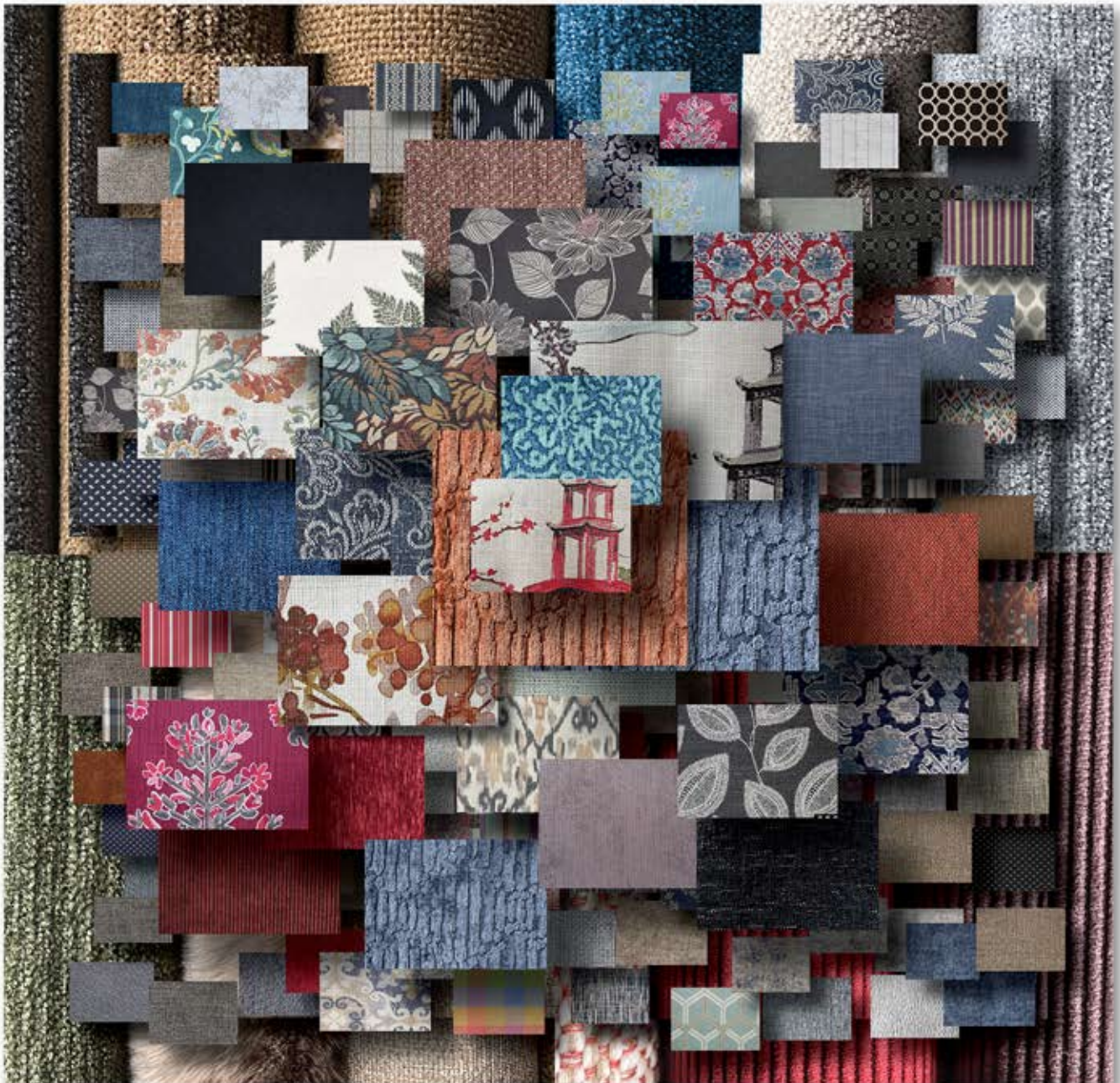




Your design. Our craftsmanship

Complete Fabric Database & Reference Guide

Version 2.19.26



Proudly made with care in the U.S.A. since 1899

Hallagan Fabric Reference Guide

2/19/2026

HMC #	GR	CONTENT	CLEANING CODE	RR/NRR	REPEAT H x V	Match	Wall Rack Location
1038	30	82% Polyester, 18% Rayon	S	RR		P	D
1067	38	100% Polyester	S	RR		P	D
1177	30	100% Polyester	S	RR		P	D
1507	50	55% Linen, 45% Viscose	S	RR	27 x 24.75	CMP	F
1515	42	100% Polyester	S	RR		P	G
1517	42	100% Polyester	S	RR		P	G
1518	42	100% Polyester	S	RR		P	G
1578	30	100% Polyester	W	RR		P	B
1579	30	100% Polyester	W	RR		P	D
1583	48	100% Polyester	S	RR		P	A
1625	36	52% Cotton, 26% Polyester, 22% Acrylic	S	RR		CMP-STR	K
1722	42	83% Polyester, 10% Acrylic, 7% Linen	W	RR	4.72 x 4.72	CMP	J
1728	42	83% Polyester, 10% Acrylic, 7% Linen	W	RR	4.72 x 4.72	CMP	I
1729	42	83% Polyester, 10% Acrylic, 7% Linen	W	RR	4.72 x 4.72	CMP	J
1818	38	51% Cotton, 49% Polyester	S	NRR	3 x 5.5	CMP	G
1831	42	100% Cotton	S	NRR	27 x 24.5	P	F
1871	48	50% Linen, 50% Cotton	S	NRR	11.75 x 13	HO	F
1925	42	100% Polyester	S	RR	1.5 X 1.5	CMP	G
1968	50	85% Polyester, 15% Cotton	S	RR	3.5 x 4.0	P	B
1969	50	85% Polyester, 15% Cotton	S	RR	3.5 x 4.0	P	D
1987	38	100% Polyester	WS	RR		P	D
2023	28	100% Cotton	S	RR		P	A
2107	30	100% Polyester	W	RR		P	D
2108	30	100% Polyester	W	RR		P	D
2167	50	100% Polyester	S	RR	9.5 x 12.75	P	D
2169	50	100% Polyester	S	RR	9.5 x 12.75	P	D
2195	50	59% Polyester, 27% Cotton, 14% Acrylic	S	RR	7 x 3.5	CMP	G
2338	42	100% Polyester	S	RR	13.5 x 12	P	G
2365	38	53% Viscose, 33% Polyester, 14% Cotton	S	RR		P	E
2375	38	100% Polyester	WS	RR		P	D
2378	38	100% Polyester	WS	RR		P	D
2379	38	100% Polyester	WS	RR		P	D
2473	66	82% Polyester, 18% Cotton	S	NRR		P	B
2561	58	100% Cotton	S	RR		P	L
2754	50	100% Polyester	S	NRR	13.25 x 12	CM	F
2798	50	100% Polyester	W	RR	12.52 x 14.17	CMP	G
2807	66	69% Cotton, 31% Polyester	S	NRR	13.25	CM	L
2863	58	100% Cotton	S	RR		P	L
2867	58	100% Cotton	S	RR		P	L
2869	58	100% Cotton	S	RR		P	L
2879	58	100% Cotton	S	RR		P	L
2924	66	65% Polyester, 35% Linen	S	RR	14 x 13.5	CMP	F
2928	66	65% Polyester, 35% Linen	S	RR	14 x 13.5	CMP	F
2957	34	85% Polyester 15% Acrylic	W	RR		P	D
2970	30	100% Polyester	S	RR		P	E
2972	30	100% Polyester	S	RR		P	B
2977	30	100% Polyester	S	RR		P	D
2978	30	100% Polyester	S	RR		P	B
2979	30	100% Polyester	S	RR		P	D
2982	30	100% Polyester	S	RR		P	D
2992	30	100% Polyester	S	RR		P	B

Hallagan Fabric Reference Guide

2/19/2026

HMC #	GR	CONTENT	CLEANING CODE	RR/NRR	REPEAT H x V	Match	Wall Rack Location
2994	30	100% Polyester	S	RR		P	C
2997	30	100% Polyester	S	RR		P	D
2998	30	100% Polyester	S	RR		P	A
3043	30	100% Polyester	W	RR		P	A
3048	30	100% Polyester	W	RR		P	A
3141	34	100% Polyester	S	RR		P	C
3144	34	100% Polyester	S	RR		P	D
3145	34	100% Polyester	S	RR		P	D
3146	34	100% Polyester	S	RR		P	C
3165	30	100% Polyester	W	NRR		P	E
3167	30	100% Polyester	W	NRR		P	D
3173	42	100% Polyester	S	RR		P	A
3273	42	100% Polyester	W	RR		P	A
3293	30	90% Polyester, 10% Nylon	W	RR		P	A
3298	30	90% Polyester, 10% Nylon	W	RR		P	B
3323	34	100% Polyester	W	RR		P	A
3397	34	100% Polyester	WS	RR		P	D
3399	34	100% Polyester	WS	RR		P	D
3432	34	61% Polypropylene, 39% Polyester	S	RR		P	D
3433	34	61% Polypropylene, 39% Polyester	S	RR		P	A
3437	34	61% Polypropylene, 39% Polyester	S	RR		P	D
3507	38	100% Polyester	S	RR		P	D
3563	50	87% Polyester, 13% Acrylic	W	RR	8 x 14	CMP	G
3569	50	87% Polyester, 13% Acrylic	W	RR	8 x 14	CMP	G
3584	62	100% Polyester	S	NRR	26.25 x 27.25	CM	F
3585	62	100% Polyester	S	NRR	26.25 x 27.25	CM	F
3664	42	90% Polyester, 7% Nylon, 3% Spandex	S	NRR		P	C
3668	42	90% Polyester, 7% Nylon, 3% Spandex	S	NRR		P	B
3669	42	90% Polyester, 7% Nylon, 3% Spandex	S	NRR		P	D
3713	42	100% Polyester	S	RR		CMP	A
3773	38	100% Polyester	S	RR		P	A
3774	38	100% Polyester	S	RR		P	C
3777	38	100% Polyester	S	RR		P	D
3789	58	100% Polyester	S	RR	14 x 20	CMP	H
3801	38	53%Cotton, 25%Polyester, 22%Acrylic	S	RR		S	K
3862	42	54% Acrylic, 46% Polyester	S	RR		P	B
3863	42	54% Acrylic, 46% Polyester	S	RR		P	A
3897	38	5% Rayon, 5% Cotton	W	RR	0 x 4.5	STR	K
3907	38	75% Rayon, 25% Polyester	S	RR		P	D
3928	42	100% Polyester	S	RR		P	D
3935	38	70% Polypropylene 30% Polyester	WS	RR	14.25x27	STR	K
3939	38	70% Polypropylene 30% Polyester	WS	RR	14.25x27	STR	K
3983	38	100% Polyester	W	RR	3.15 x 2.68	CMP	J
3988	38	100% Polyester	W	RR	3.15 x 2.68	CMP	J
3994	42	83% Polyester, 10% Acrylic, 7% Linen	W	NRR	26.10x26.38	P	F
3996	42	83% Polyester, 10% Acrylic, 7% Linen	W	NRR	26.10x26.38	P	F
4028	50	45% Polyester, 55% Acrylic	S	NRR	2.5 x -	STR	K
4041	38	59% Polyester, 41% Acrylic	W	RR	1.5 x 1.5	P	D
4043	38	59% Polyester, 41% Acrylic	W	RR	1.5 x 1.5	P	B
4046	38	59% Polyester, 41% Acrylic	W	RR	1.5 x 1.5	P	D
4048	38	59% Polyester, 41% Acrylic	W	RR	1.5 x 1.5	P	B

Hallagan Fabric Reference Guide

2/19/2026

HMC #	GR	CONTENT	CLEANING CODE	RR/NRR	REPEAT H x V	Match	Wall Rack Location
4063	62	100% Polyester	S	NRR	27 x 27	CMP	F
4066	62	100% Polyester	S	NRR	27 x 27	CMP	F
4097	32	5% Olefin	S	RR		P	D
4129	46	64% Polyester, 36% Viscose	W	RR		P	D
4152	58	87% Polyester, 13% Rayon	S	NRR	9.5 x 5.25	CMP	G
4157	58	87% Polyester, 13% Rayon	S	NRR	9.5 x 5.25	CMP	G
4163	34	100% Polyester	S	RR		P	A
4168	34	100% Polyester	S	RR		P	A
4169	34	100% Polyester	S	RR		P	B
4188	34	65% Polypropylene 35% Polyester	WS	RR		P	B
4193	46	91% Polyester, 9% Cotton	S	RR		P	B
4194	46	91% Polyester, 9% Cotton	S	RR		P	C
4199	46	91% Polyester, 9% Cotton	S	RR		P	D
4246	32	64% Olefin, 33% Polyester, 3% Cotton	W	RR		P	C
4257	64	100% Polyester	WS	RR	14.37 x 14.12	P	D
4273	50	100% Polyester	S	RR	4.88 x 4.50	P	A
4274	50	100% Polyester	S	RR	4.88 x 4.50	P	C
4277	50	100% Polyester	S	RR	4.88 x 4.50	P	D
4327	42	75% Cotton, 25% Linen	S	NRR	27.13x24.75	CMP	F
4345	42	100% Cotton	S	NRR	25.25 x 13.5	CMP	F
4347	42	100% Cotton	S	NRR	25.25 x 13.5	CMP	F
4384	46	87% Polyester, 13% Cotton	S	RR	13 1/2 x 9	CMP	H
4415	34	100% Cotton	S	NRR	6.75 x 13.75	CMP	F
4469	42	82% Polyester, 18% Cotton	S	RR	15.25x14.75	P	G
4507	38	95% Polyester, 5% Acrylic	W	RR	.75" x .75"	CMP	G
4509	38	95% Polyester, 5% Acrylic	W	RR	.75" x .75"	CMP	G
4543	46	75% Cotton, 25% Linen	S	NRR	27 x 25.25	P	F
4544	46	75% Cotton, 25% Linen	S	NRR	27 x 25.25	P	F
4547	46	75% Cotton, 25% Linen	S	NRR	27 x 25.25	P	F
4580	46	80% Polyester, 20% Viscose	W	RR		P	E
4583	46	80% Polyester, 20% Viscose	W	RR		P	A
4585	46	80% Polyester, 20% Viscose	W	RR		P	E
4588	46	80% Polyester, 20% Viscose	W	RR		P	B
4589	46	80% Polyester, 20% Viscose	W	RR		P	D
4593	62	100% Polyester	S	NRR	28.5 x 28.5	CMP	F
4597	62	100% Polyester	S	NRR	28.5 x 28.5	CMP	F
4598	62	100% Polyester	S	NRR	28.5 x 28.5	CMP	F
4599	62	100% Polyester	S	NRR	28.5 x 28.5	CMP	F
4613	46	100% Polyester	S	RR	.75" x .50"	P	A
4618	46	100% Polyester	S	RR	.75" x .50"	P	B
4663	46	57% Polyester, 30% Olefin, 13% Linen	S	RR	27 x 16	P	G
4667	46	57% Polyester, 30% Olefin, 13% Linen	S	RR	27 x 16	P	G
4669	46	57% Polyester, 30% Olefin, 13% Linen	S	RR	27 x 16	P	G
4712	36	49% Cotton, 32% Polyester, 19% Olefin	S	RR		CMP-STR	J
4717	36	49% Cotton, 32% Polyester, 19% Olefin	S	RR		CMP-STR	J
4727	58	100% Polyester	S	NRR	5.75 x 2	STR	F
4881	48	100% Cotton	S	NRR		CMP	F
4882	48	100% Cotton	S	NRR		CMP	F
4927	46	100% Polyester	S	NRR	27 x 25.25	P	F
4932	42	18% Polyester	WS	RR		P	A
4939	42	18% Polyester	WS	RR		P	D

Hallagan Fabric Reference Guide

2/19/2026

HMC #	GR	CONTENT	CLEANING CODE	RR/NRR	REPEAT H x V	Match	Wall Rack Location
4943	42	18% Polyester	WS	RR		P	A
4949	42	18% Polyester	WS	RR		P	D
4967	30	100% Polyester	S	RR		P	D
4973	50	100% Polyester	WS	RR	7.5 X 6.75	CMP	J
4978	50	100% Polyester	WS	RR	7.5 X 6.75	CMP	J
5057	62	100% Cotton	S	RR		CMP	L
5058	62	100% Cotton	S	RR		CMP	L
5061	62	100% Cotton	S	RR	14 7/8 x 13 1/4	CMP	L
5069	62	100% Cotton	S	RR	12 3/4 X 13 3/4	CM	L
5071	36	73% Polyester, 27% Cotton	S	RR	23.25 x 29	P	F
5077	36	73% Polyester, 27% Cotton	S	RR	23.25 x 29	P	F
5124	30	64% Olefin, 36% Polyester	WS	RR		P	C
5147	50	100% Polyester	WS	RR	5.88 x 5.06	STR	K
5148	50	100% Polyester	WS	RR	5.88 x 5.06	STR	K
5149	50	100% Polyester	WS	RR	5.88 x 5.06	STR	K
5191	62	100% Cotton	S	RR	6.5 x 6.62	CMP	L
5199	62	100% Cotton	S	RR	6.5 x 6.62	CMP	L
5250	50	100% Polyester	WS	RR		P	E
5252	50	100% Polyester	WS	RR		P	A
5253	50	100% Polyester	WS	RR		P	A
5254	50	100% Polyester	WS	RR		P	C
5255	50	100% Polyester	WS	RR		P	E
5257	50	100% Polyester	WS	RR		P	B
5258	50	100% Polyester	WS	RR		P	B
5259	50	100% Polyester	WS	RR		P	B
5269	54	100% Cotton	S	RR	14 1/4X14 3/4	CMP	L
5274	42	55% Linen, 45% Rayon	WS	RR	17 x 13.5	P	F
5333	42	86% Polyester, 14% Acrylic	W	RR		P	A
5338	42	86% Polyester, 14% Acrylic	W	RR		P	A
5339	42	86% Polyester, 14% Acrylic	W	RR		P	D
5359	50	84% Cotton, 16% Polyester	S	NRR	1 x 0	STR	K
5440	54	69% Polyester, 23% Viscose, 8% Linen	S	NRR	27 x 13.5	P	F
5445	54	69% Polyester, 23% Viscose, 8% Linen	S	NRR	27 x 13.5	P	F
5447	54	69% Polyester, 23% Viscose, 8% Linen	S	NRR	27 x 13.5	P	F
5467	34	95% Cotton, 5% Linen	S	NRR	13.5 x 9	CM	F
5497	62	100% Cotton	S	RR	6.5 x 6.62	CMP	L
5499	62	100% Cotton	S	RR	6.5 x 6.62	CMP	L
5522	54	100% Polyester	S	RR	2" x 1.25"	CMP	G
5524	54	100% Polyester	S	RR	2" x 1.25"	CMP	G
5582	50	100% Polyester	S	RR	2 x .38	STR	B
5583	50	100% Polyester	S	RR	2 x .38	STR	A
5589	50	100% Polyester	S	RR	2 x .38	STR	D
5648	50	61% Cotton, 39% Polyester	W	RR	.4 x .4	P	G
5665	28	100% Cotton	S	RR		CMP	J
5693	58	66% Polyester, 34% Cotton	WS	RR		P	A
5703	38	100% Polyester	S	RR	1 x 7/8	HO	G
5709	38	100% Polyester	S	RR	1 x 7/8	HO	G
5714	50	92% Polyester 8% Rayon	S	RR	2.75 x 2.75	CMP	G
5715	50	92% Polyester, 8 % Rayon	S	RR	2.75 x 2.75	CMP	G
5717	50	92% Polyester, 8 % Rayon	S	RR	2.75 x 2.75	CMP	G
5737	50	41% Polyester,38% Olefin, 21% Cotton	WS	RR	13.875x13.5	P	G

Hallagan Fabric Reference Guide

2/19/2026

HMC #	GR	CONTENT	CLEANING CODE	RR/NRR	REPEAT H x V	Match	Wall Rack Location
5740	54	100% Polyester	S	NRR	7 x 7.5	CMP	G
5747	54	100% Polyester	S	NRR	7 x 7.5	CMP	G
5769	46	35% Polyester 34% Rayon 31% Cotton	S	RR	9 3/8 x 9 3/8	CMP	G
5787	66	100% Polyester	S	NRR	14 x 19.75	CMP	F
5797	58	60% Acrylic, 40% Polyester	S	RR		P	D
5798	58	60% Acrylic, 40% Polyester	S	RR		P	B
5799	58	60% Acrylic, 40% Polyester	S	RR		P	B
5841	36	49% Cotton, 32% Polyester, 19% Olefin	S	RR		CMP	I
5849	36	49% Cotton, 32% Polyester, 19% Olefin	S	RR		CMP	J
5901	66	100% Polyester	S	NRR	14.25x27.25	CMP	G
5906	66	100% Polyester	S	NRR	14.25x27.25	CMP	G
5907	66	100% Polyester	S	NRR	14.25x27.25	CMP	G
5913	58	92% Polyester, 8% Linen	S	NRR	13.5 x 13.5	CMP	F
5914	58	92% Polyester, 8% Linen	S	NRR	13.5 x 13.5	CMP	F
5919	58	92% Polyester, 8% Linen	S	NRR	13.5 x 13.5	CMP	F
6002	38	69% Polyester, 31% Cotton	S	RR		P	D
6003	38	69% Polyester, 31% Cotton	S	RR		P	A
6004	38	69% Polyester, 31% Cotton	S	RR		P	C
6005	38	69% Polyester, 31% Cotton	S	RR		P	D
6008	38	69% Polyester, 31% Cotton	S	RR		P	B
6009	38	69% Polyester, 31% Cotton	S	RR		P	D
6090	62	100% Cotton	S	RR	1 1/2 X 1 3/4	CMP	L
6099	62	100% Cotton	S	RR	1 1/2 X 1 3/4	CMP	L
6111	30	51%Olefin, 49% Polyester	WS	RR		P	C
6115	30	51%Olefin, 49% Polyester	WS	RR		P	D
6145	30	100% Polyester	W	RR		P	D
6147	30	100% Polyester	W	RR		P	D
6148	30	100% Polyester	W	RR		P	B
6167	42	100% Polyester	S	RR		P	D
6184	62	91% Polyester, 9% Linen	S	NRR	27.5 x 27.25	CMP	F
6185	62	91% Polyester, 9% Linen	S	NRR	27.5 x 27.25	CMP	F
6235	62	100% Polyester	S	NRR	18.4 x 27.5	CM	F
6237	62	100% Polyester	S	NRR	18.4 x 27.5	CM	F
6294	66	100% Polyester	S	RR	28.5x28	CMP	F
6295	66	100% Polyester	S	RR	28.5x28	CMP	F
6297	66	100% Polyester	S	RR	28.5x28	CMP	F
6305	40	75% Cotton, 25% Linen	W	RR	27 x 24.75	CMP	F
6317	66	100% Polyester	W	RR	15.5 x 14	CM	H
6322	38	76% Olefin, 24% Polyester	WS	RR		P	D
6323	38	76% Olefin, 24% Polyester	WS	RR		P	B
6327	38	76% Olefin, 24% Polyester	WS	RR		P	D
6334	50	90% Polyester, 10% Linen	S	NRR	27.25x27.25	P	F
6337	50	90% Polyester, 10% Linen	S	NRR	27.25x27.25	P	F
6339	50	90% Polyester, 10% Linen	S	NRR	27.25x27.25	P	F
6373	52	84% Polypropylene, 16% Polyester	WS	RR	13.64 x 11.64	CMP	G
6374	52	84% Polypropylene, 16% Polyester	WS	RR	13.64 x 11.64	CMP	G
6393	50	100% Polyester	W	NRR		P	A
6398	50	100% Polyester	W	NRR		P	B
6402	34	100% Cotton	S	RR		CMP	I
6442	42	52% Polyester, 48% Acrylic	S	RR		P	D
6447	42	52% Polyester, 48% Acrylic	S	RR		P	D

Hallagan Fabric Reference Guide

2/19/2026

HMC #	GR	CONTENT	CLEANING CODE	RR/NRR	REPEAT H x V	Match	Wall Rack Location
6448	42	52% Polyester, 48% Acrylic	S	RR		P	B
6493	34	100% Cotton	S	NRR	2.37 x 4.25	CMP	F
6526	50	100% Polyester	S	NRR	13.75 x 15.5	CMP	G
6536	38	90% Polyester, 10% Nylon	S	NRR		P	C
6537	38	90% Polyester, 10% Nylon	S	NRR		P	D
6539	38	90% Polyester, 10% Nylon	S	NRR		P	D
6547	42	82% Polyester, 18% Rayon	S	RR		P	D
6548	42	82% Polyester, 18% Rayon	S	RR		P	B
6549	42	82% Polyester, 18% Rayon	S	RR		P	D
6551	42	82% Polyester, 18% Rayon	S	RR		P	C
6552	42	82% Polyester, 18% Rayon	S	RR		P	B
6553	42	82% Polyester, 18% Rayon	S	RR		P	A
6559	42	82% Polyester, 18% Rayon	S	RR		P	D
6586	46	100% Polyester	S	RR	13.7 x 11.11	P	C
6604	54	73% Polyester 27% Viscose	S	RR		P	C
6612	54	73% Polyester, 27% Viscose	S	RR		P	B
6613	54	73% Polyester, 27% Viscose	S	RR		P	A
6615	54	73% Polyester, 27% Viscose	S	RR		P	E
6619	54	73% Polyester, 27% Viscose	S	RR		P	D
6661	46	57% Rayon, 43% Polyester	S	RR		CMP-STR	K
6738	46	100% Polyester	S	RR	13.5 x 19	P	G
6829	28	100% Polyester	S	RR	1 1/2" x 1"	P	D
6977	46	100% Polyester	S	RR	13.5 x 0	STR	K
6987	46	84% Polyester, 7% Linen,9% Acrylic	W	RR	9 X 13	P	G
6989	46	84% Polyester, 7% Linen,9% Acrylic	W	RR	9 X 13	P	G
6999	38	100% Polyester	W	NRR	3.15 x 2.68	CMP	J
7010	58	82% Rayon, 16% Polyester, 2% Nylon	S	RR	2.75 x 2.75	STR	E
7015	58	82% Rayon, 16% Polyester, 2% Nylon	S	RR	2.75 x 2.75	STR	E
7017	58	82% Rayon, 16% Polyester, 2% Nylon	S	RR	2.75 x 2.75	STR	D
7243	42	100% Polyester	WS	RR		P	A
7248	42	100% Polyester	WS	RR		P	A
7249	42	100% Polyester	WS	RR		P	B
7319	50	100% Polyester	S	RR	1.5 x 1.5	CMP	G
7382	34	100% Polyester	S	RR		P	B
7482	34	100% Polyester	S	RR		P	D
7483	34	100% Polyester	S	RR		P	A
7484	34	100% Polyester	S	RR		P	C
7487	34	100% Polyester	S	RR		P	D
7489	34	100% Polyester	S	RR		P	D
7510	46	85% Cotton 15% linen	S	NRR	13.5 x 12.6	CMP	F
7511	46	85% Cotton 15% linen	S	NRR	13.5 x 12.6	CMP	F
7513	46	85% Cotton 15% linen	S	NRR	13.5 x 12.6	CMP	F
7527	38	100% Polyester	S	RR	17.5 x 28	P	D
7528	38	100% Polyester	S	RR	17.5 x 28	P	A
7541	30	92% Polyester, 8% Nylon	S	NRR		P	C
7543	30	92% Polyester, 8% Nylon	S	NRR		P	B
7545	30	92% Polyester, 8% Nylon	S	NRR		P	E
7547	30	92% Polyester, 8% Nylon	S	NRR		P	D
7637	34	84% Polyester, 16% Rayon	W	RR		P	D
7782	54	63% Polyester, 26% Cotton, 11% Rayon	S	RR	13 1/2 x 14	P	H
7783	54	63% Polyester, 26% Cotton, 11% Rayon	S	RR	13 1/2 x 14	P	H

Hallagan Fabric Reference Guide

2/19/2026

HMC #	GR	CONTENT	CLEANING CODE	RR/NRR	REPEAT H x V	Match	Wall Rack Location
7788	54	63% Polyester, 26% Cotton, 11% Rayon	S	RR	13 1/2 x 14	P	H
7793	48	83% Polyester, 17% Cotton	S	RR		P	A
7849	42	78% Polyester, 22% Viscose	S	RR		P	D
7917	50	100% Polyester	W	RR	30 x 28	P	G
7919	50	100% Polyester	W	RR	30 x 28	P	G
7962	52	100% Polyester	W	RR	25 x 14.25	P	G
7969	52	100% Polyester	W	RR	25 x 14.25	P	G
8023	34	100% Polyester	S	RR		P	A
8029	34	100% Polyester	S	RR		P	D
8110	30	80% Polyester, 20% Acrylic	WS	RR		P	E
8176	46	95% Polyester, 5% Linen	S	NRR	13.5 x 13.5	P	F
8186	42	100% Polyester	S	NRR	4.5 x 2	CMP	F
8267	46	100% Polyester	WS	RR		P	D
8268	46	100% Polyester	WS	RR		P	B
8315	42	100% Polyester	W	RR	9 x 9	CMP	J
8317	42	100% Polyester	W	RR	9 x 9	CMP	J
8319	42	100% Polyester	W	RR	9 x 9	CMP	J
8408	36	64% Cotton, 36% Polyester	S	RR		CMP	J
8541	42	100% Polyester	S	RR		P	C
8547	42	100% Polyester	S	RR		P	D
8548	42	100% Polyester	S	RR		P	B
8549	42	100% Polyester	S	RR		P	D
8553	42	100% Polyester	WS	RR		P	A
8837	28	100% Cotton	S	RR	27" x	STR	K
8880	34	79% Polyester, 21% PU	W	RR		P	B
8882	34	79% Polyester, 21% PU	W	RR		P	B
8883	34	79% Polyester, 21% PU	W	RR		P	B
8888	34	79% Polyester, 21% PU	W	RR		P	B
8889	34	79% Polyester, 21% PU	W	RR		P	D
8978	44	87% Cotton 13% Rayon	S	RR	9 x 5	CMP	F
9037	30	100% Cotton	W	NRR	1 x 1.5	P	F
9038	30	100% Cotton	W	NRR	1 x 1.5	P	F
9080	38	90% Polyester, 10% Nylon	S	NRR		P	E
9081	38	90% Polyester, 10% Nylon	S	NRR		P	C
9082	38	90% Polyester, 10% Nylon	S	NRR		P	B
9083	38	90% Polyester, 10% Nylon	S	NRR		P	A
9085	38	90% Polyester, 10% Nylon	S	NRR		P	D
9435	66	83% Polyester, 17% Rayon	S	NRR	3.5 x 4.25	CMP	G
9437	66	83% Polyester, 17% Rayon	S	NRR	3.5 x 4.25	CMP	G
9438	66	83% Polyester, 17% Rayon	S	NRR	3.5 x 4.25	CMP	G
9701	38	70% Polyester, 30% Cotton	S	RR	3.5 X 3.75	OH	G
9707	38	70% Polyester, 30% Cotton	S	RR	3.5 X 3.75	OH	G
9810	28	100% Polyester	W	RR		P	A
9884	38	100% Cotton	S	RR	6.8 x 7.75	CMP	I
C1004	42	100% Polyester	WS	RR		P	D
C3001	42	100% Polyester	WS	RR		P	B
C3002	42	100% Polyester	WS	RR		P	B
C3005	42	100% Polyester	WSC	RR		P	E
C3009	42	100% Polyester	WSC	RR		P	D
C3103	44	92% Polyester, 8% Linen	CW	RR		P	A
C3723	58	100% Polyester	CW	RR	1.88 x 2.25	HO	A

Hallagan Fabric Reference Guide

2/19/2026

HMC #	GR	CONTENT	CLEANING CODE	RR/NRR	REPEAT H x V	Match	Wall Rack Location
C3727	58	100% Polyester	CW	RR	1.88 x 2.25	HO	D
C4100	42	100% Polyester	CW	RR		P	E
C4103	42	100% Polyester	CW	RR		P	A
C4107	42	100% Polyester	CW	RR		P	D
C4108	42	100% Polyester	CW	RR		P	A
C5103	60	Acrylic, 5% Linen	CW	RR		P	A
C5109	60	Acrylic, 5% Linen	CW	RR		P	A
C7143	54	100% Polyester	CW	RR		P	A
C7148	54	100% Polyester	CW	RR		P	A
C8132	42	100% Polyester	WSC	RR		P	A
C8136	42	100% Polyester	WS	RR		P	D
C8138	42	100% Polyester	WS	RR		P	D
C9143	38	100% Polyester	WSC	RR		P	A
C9149	38	100% Polyester	WSC	RR		P	D
C9159	38	100% Polyester	WSC	RR		P	D
C9163	46	54% Olefin, 46% Polyester	WS	RR		P	A
C9164	46	54% Olefin, 46% Polyester	WS	RR		P	B
C9165	46	54% Olefin, 46% Polyester	WS	RR		P	E
C9167	46	54%Olefin 46% Polyester	WS	RR		P	D
C9168	46	54% Olefin, 46% Polyester	WS	RR		P	B
C9169	46	54%Olefin 46% Polyester	WS	RR		P	D
C9203	50	100% Polyester	WS	RR		P	A
IN7109	B	100% Polyester	WSB	NRR	2.4 x 16.2	HO	G
IN7519	54	96% Polyester 4% Olefin	WSB	RR		P	D
IN7718	A	86% Polyester 14% Olefin	WSB	RR	0 x 4.5	STR	K
IN7719	A	86% Polyester 14% Olefin	WSB	RR	0 x 4.5	STR	K
IN7923	66	100% Polyester	WSB	RR		P	A
IN7927	66	100% Polyester	WSB	RR		P	D
IN7929	66	100% Polyester	WSB	RR		P	D
R8100	34	100% Olefin	WSB	RR		P	A
R8102	34	100% Olefin	WSB	RR		P	D
R8103	34	100% Olefin	WSB	RR		P	A
R8107	34	100% Olefin	WSB	RR		P	D
R8108	34	100% Olefin	WSB	RR		P	B
R8109	34	100% Olefin	WSB	RR		P	D
R8112	34	100% Olefin	WSB	RR		P	D
R8113	34	100% Olefin	WSB	RR		P	A
R8117	34	100% Olefin	WSB	RR		P	D
R8119	34	100% Olefin	WSB	RR		P	B
R8122	38	100% Olefin	WSB	RR			K
R8127	38	100% Olefin	WSB	RR			K
R8129	38	100% Olefin	WSB	RR			K
R8137	34	100% Olefin	WS	RR		P	D
R8138	34	100% Olefin	WSB	RR		P	B
R8139	34	100% Olefin	WS	RR		P	D
R8149	34	100% Olefin	WS	RR		P	D
R8202	30	100% Olefin	WSB	RR	1.5" x .25"	P	A
R8203	30	100% Olefin	WSB	RR	1.5" x .25"	P	A
R8204	30	100% Olefin	WSB	RR	1.5" x .25"	P	C
R8207	30	100% Olefin	WSB	RR	1.5" x .25"	P	D
R8209	30	100% Olefin	WSB	RR	1.5" x .25"	P	D

Hallagan Fabric Reference Guide

2/19/2026

HMC #	GR	CONTENT	CLEANING CODE	RR/NRR	REPEAT H x V	Match	Wall Rack Location
R8342	42	100% Olefin	WSB	RR		P	D
R8343	42	100% Olefin	WSB	RR		P	A
R8345	42	100% Olefin	WSB	RR		P	E
R8347	42	100% Olefin	WSB	RR		P	D
R8349	42	100% Olefin	WSB	RR		P	A
R8373	30	85% Polyester, 15% Polypropylene	WSB	RR		P	A
R8377	30	85% Polyester, 15% Polypropylene	WSB	RR		P	D
R8378	30	85% Polyester, 15% Polypropylene	WSB	RR		P	B
R8379	30	85% Polyester, 15% Polypropylene	WSB	RR		P	D
R8410	50	91% Olefin 7% Polyester	WSB	RR		P	E
R8412	50	91% Olefin 7% Polyester	WSB	RR		P	D
R8414	50	91% Olefin 7% Polyester	WSB	RR		P	C
R8415	50	91% Olefin 7% Polyester	WSB	RR		P	E
R8419	50	91% Olefin 7% Polyester	WSB	RR		P	D
R8462	34	99% Polypropylene, 1% Polyester	WSB	RR		P	D
R8463	34	99% Polypropylene, 1% Polyester	WSB	RR		P	A
R8467	34	99% Polypropylene, 1% Polyester	WSB	RR		P	D
R8468	34	99% Polypropylene, 1% Polyester	WSB	RR		P	D
R8469	34	99% Polypropylene, 1% Polyester	WSB	RR		P	D
R8473	34	99% Polypropylene, 1% Polyester	WSB	RR		P	A
R8493	30	75% Polypropylene, 25% Polyester	WSB	RR		P	A
R8513	34	100% Olefin	WS	RR		P	A
R8515	34	100% Olefin	WS	RR		P	E
R8517	34	100% Olefin	WS	RR		P	D
R8520	30	85% Polyester, 15% Polypropylene	WSB	RR		P	E
R8522	30	85% Polyester, 15% Polypropylene	WSB	RR		P	B
R8523	30	85% Polyester, 15% Polypropylene	WSB	RR		P	A
R8528	30	85% Polyester, 15% Polypropylene	WSB	RR		P	A
R8529	30	85% Polyester, 15% Polypropylene	WSB	RR		P	D
R8537	46	100% Polypropylene	WSB	RR	6.5 x 7	CMP	J
R8548	30	85% Polyester, 15% Polypropylene	WSB	RR		P	B
R8563	30	31% Polypropylene, 69% Polyester	WSB	RR		P	B
R8568	30	31% Polypropylene, 69% Polyester	WSB	RR		P	B
R8625	34	100% Olefin	WSB	RR		CMP	J
R8628	34	100% Olefin	WSB	RR		CMP	J
R8673	58	98% Polypropylene, 2% Polyester	WSB	RR	3.25 x 10.5	CMP	G
R8678	58	98% Polypropylene, 2% Polyester	WSB	RR	3.25 x 10.5	CMP	G
R8679	58	98% Polypropylene, 2% Polyester	WSB	RR	3.25 x 10.5	CMP	G
R8722	42	85% Polypropylene, 15% Polyester	WSB	RR		P	D
R8723	42	85% Polypropylene, 15% Polyester	WSB	RR		P	A
R8725	42	85% Polypropylene, 15% Polyester	WSB	RR		P	D
R8727	42	85% Polypropylene, 15% Polyester	WSB	RR		P	D
R8728	42	85% Polypropylene, 15% Polyester	WSB	RR		P	B
R8737	62	100% Polypropylene	WSB	RR	12.75 x 13.87	CMP	G
R8753	58	100% Polypropylene	WSB	RR	4.5 x 4.5	CMP	G
R8767	38	92% Polypropylene, 8% Polyester	WSB	RR		P	D
R8768	38	92% Polypropylene, 8% Polyester	WSB	RR		P	B
R8828	50	98% Polypropylene, 2% Polyester	WSB	RR	3.25 x 1.50	CMP	K
R8829	50	98% Polypropylene, 2% Polyester	WSB	RR	3.25 x 1.50	CMP	K
R8840	38	100% Polypropylene	WSB	RR		P	E
R8842	38	100% Polypropylene	WSB	RR		P	D

Hallagan Fabric Reference Guide

2/19/2026

HMC #	GR	CONTENT	CLEANING CODE	RR/NRR	REPEAT H x V	Match	Wall Rack Location
R8843	38	100% Polypropylene	WSB	RR		P	A
R8847	38	100% Polypropylene	WSB	RR		P	D
R8848	38	100% Polypropylene	WSB	RR		P	B
R8849	38	100% Polypropylene	WSB	RR		P	D
R8852	38	100% Polypropylene	WSB	RR		P	D
R8859	38	100% Polypropylene	WSB	RR		P	D
R8927	38	100% Polypropylene	WSB	RR	5.50 x 0	STR	K
R8928	38	100% Polypropylene	WSB	RR	5.50 x 0	STR	K
R8929	38	100% Polypropylene	WSB	RR	5.50 x 0	STR	K
R8944	30	100% Polypropylene	WSB	RR		P	C
R8945	30	100% Polypropylene	WSB	RR		P	D
R8947	30	100% Polypropylene	WSB	RR		P	D
R8948	30	100% Polypropylene	WSB	RR		P	B
R8958	44	99% Polypropylene, 1% Polyester	WSB	RR		P	A
R8963	44	99% Polypropylene, 1% Polyester	WSB	RR		P	A
R8968	44	99% Polypropylene, 1% Polyester	WSB	RR		P	B
R8969	44	99% Polypropylene, 1% Polyester	WSB	RR		P	B
R9013	38	73% Polypropylene, 27% Polyester	WSB	RR		P	A
R9018	38	73% Polypropylene, 27% Polyester	WSB	RR		P	B
R9019	38	73% Polypropylene, 27% Polyester	WSB	RR		P	D
R9023	38	73% Polypropylene, 27% Polyester	WSB	RR		P	A
R9028	38	73% Polypropylene, 27% Polyester	WSB	RR		P	B
R9070	54	100% Polypropylene	WSB	RR		CMP	G
R9072	54	100% Polypropylene	WSB	RR		CMP	G
R9077	54	100% Polypropylene	WSB	RR		CMP	G
R9078	54	100% Polypropylene	WSB	RR		CMP	G
R9079	54	100% Polypropylene	WSB	RR		CMP	G
R9150	58	51% Polypropylene, 49% Polyester	WSB	RR	28.125 x 24.375	CMP	E
R9153	58	51% Polypropylene, 49% Polyester	WSB	RR	28.125 x 24.375	CMP	A
R9157	58	51% Polypropylene, 49% Polyester	WSB	RR	28.125 x 24.375	CMP	D
R9158	58	51% Polypropylene, 49% Polyester	WSB	RR	28.125 x 24.375	CMP	B
R9240	50	50% Polyester, 50% Polypropylene	WSB	RR		CMP	E
R9243	50	50% Polyester, 50% Polypropylene	WSB	RR		CMP	A
R9248	50	50% Polyester, 50% Polypropylene	WSB	RR		CMP	B
R9249	50	50% Polyester, 50% Polypropylene	WSB	RR		CMP	D
R9317	54	99% Polypropylene, 1% Polyester	WSB	RR		P	G
R9318	54	99% Polypropylene, 1% Polyester	WSB	RR		P	G
R9319	54	99% Polypropylene, 1% Polyester	WSB	RR		P	G
R9463	30	82% Polyester, 18% Polypropylene	WSB	RR		P	A
R9467	30	82% Polyester, 18% Polypropylene	WSB	RR		P	D
R9468	30	82% Polyester, 18% Polypropylene	WSB	RR		P	A
R9469	30	82% Polyester, 18% Polypropylene	WSB	RR		P	B
S6672	46	100% Sunbrella Acrylic	WS	RR		P	A
S6679	46	100% Sunbrella Acrylic	WS	RR		P	D
SN6135	30	100% Olefin	WS	RR		P	E
SN6137	30	100% Olefin	WS	RR		P	D
SN6138	30	100% Olefin	WS	RR		P	D
SN6139	30	100% Olefin	WS	RR		P	D
SN6280	38	53% Polyester, 47% Olefin	WSB	RR		P	E
SN6283	38	53% Polyester, 47% Olefin	WSB	RR		P	A
SN6344	30	100% Olefin	WS	RR		P	B

Hallagan Fabric Reference Guide

2/19/2026

HMC #	GR	CONTENT	CLEANING CODE	RR/NRR	REPEAT H x V	Match	Wall Rack Location
SN6348	30	100% Olefin	WS	RR		P	D
SN6349	30	100% Olefin	WS	RR		P	D
SN6352	30	98% Olefin, 2% Polyester	WS	RR		P	D
SN6357	30	98% Olefin, 2% Polyester	WS	RR		P	D
SN6564	38	100% Olefin	WS	RR		STR	K
T3399	38	100% Polyester	WSB	RR		STR	K
T3413	50	100% Polyester	WSB	RR	3.365 x 4.5	CMP	I
T3418	50	100% Polyester	WSB	RR	3.365 x 4.5	CMP	I