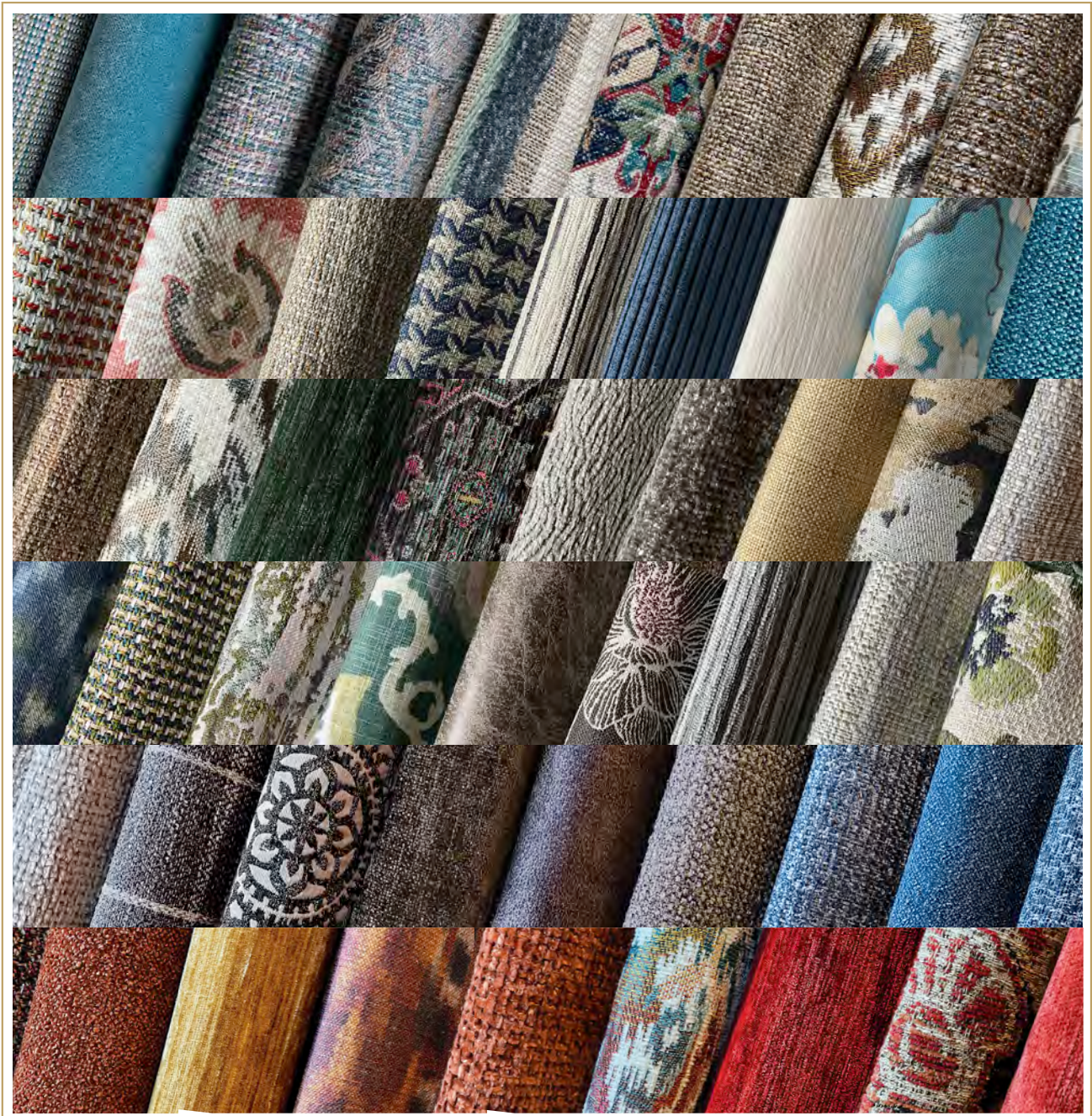




Your design. Our craftsmanship

Complete Fabric Database & Reference Guide

Version 9.17.24



Proudly made with care in the U.S.A. since 1899

Hallagan Fabric Reference Guide

9.17.2024

| HMC # | GR | CONTENT | CLEANING CODE | RR/NRR | REPEAT H x V | Wall Rack Location |
|-------|----|--|---------------|--------|---------------|--------------------|
| 1038 | 30 | 82% Polyester, 18% Rayon | S | RR | | D |
| 1067 | 38 | 100% Polyester | S | RR | | D |
| 1177 | 30 | 100% Polyester | S | RR | | D |
| 1507 | 50 | 55% Linen, 45% Viscose | S | RR | 27 x 24.75 | F |
| 1515 | 42 | 100% Polyester | S | RR | | G |
| 1517 | 42 | 100% Polyester | S | RR | | G |
| 1518 | 42 | 100% Polyester | S | RR | | G |
| 1578 | 30 | 100% Polyester | W | RR | | B |
| 1579 | 30 | 100% Polyester | W | RR | | B |
| 1583 | 38 | 100% Polyester | S | RR | | A |
| 1588 | 38 | 100% Polyester | S | RR | | B |
| 1625 | 36 | 52% Cotton, 26% Polyester, 22% Acrylic | S | RR | | K |
| 1722 | 38 | 83% Polyester, 10% Acrylic, 7% Linen | W | RR | 4.72 x 4.72 | J |
| 1728 | 38 | 83% Polyester, 10% Acrylic, 7% Linen | W | RR | 4.72 x 4.72 | I |
| 1729 | 38 | 83% Polyester, 10% Acrylic, 7% Linen | W | RR | 4.72 x 4.72 | J |
| 1748 | 42 | 100% Polyester | S | RR | 2 x 2 | D |
| 1749 | 42 | 100% Polyester | S | RR | 2 x 2 | D |
| 1818 | 38 | 51% Cotton, 49% Polyester | S | NRR | 3 x 5.5 | G |
| 1831 | 42 | 100% Cotton | S | NRR | 27 x 24.5 | F |
| 1839 | 42 | 100% Cotton | S | NRR | 27 x 24.5 | F |
| 1867 | 48 | 55% Linen, 45% Rayon | S | NRR | 14 x 13 | F |
| 1871 | 48 | 50% Linen, 50% Cotton | S | NRR | 11.75 x 13 | F |
| 1924 | 42 | 100% Polyester | S | RR | 1.5 X 1.5 | G |
| 1925 | 42 | 100% Polyester | S | RR | 1.5 X 1.5 | G |
| 1968 | 50 | 85% Polyester, 15% Cotton | S | RR | 3.5 x 4.0 | B |
| 1969 | 50 | 85% Polyester, 15% Cotton | S | RR | 3.5 x 4.0 | D |
| 1987 | 30 | 100% Polyester | WS | RR | | D |
| 2023 | 28 | 100% Cotton | S | RR | | A |
| 2104 | 30 | 100% Polyester | W | RR | | C |
| 2107 | 30 | 100% Polyester | W | RR | | D |
| 2108 | 30 | 100% Polyester | W | RR | | D |
| 2163 | 50 | 100% Polyester | S | RR | 9.5 x 12.75 | A |
| 2167 | 50 | 100% Polyester | S | RR | 9.5 x 12.75 | D |
| 2169 | 50 | 100% Polyester | S | RR | 9.5 x 12.75 | D |
| 2195 | 50 | 59% Polyester, 27% Cotton, 14% Acrylic | S | RR | 7 x 3.5 | G |
| 2337 | 42 | 100% Polyester | S | RR | 13.5 x 12 | G |
| 2338 | 42 | 100% Polyester | S | RR | 13.5 x 12 | G |
| 2365 | 38 | 53% Viscose, 33% Polyester, 14% Cotton | S | RR | | E |
| 2375 | 38 | 100% Polyester | WS | RR | | D |
| 2378 | 38 | 100% Polyester | WS | RR | | D |
| 2379 | 38 | 100% Polyester | WS | RR | | D |
| 2472 | 66 | 82% Polyester, 18% Cotton | S | NRR | | D |
| 2473 | 66 | 82% Polyester, 18% Cotton | S | NRR | | A |
| 2477 | 66 | 82% Polyester, 18% Cotton | S | NRR | | D |
| 2479 | 66 | 82% Polyester, 18% Cotton | S | NRR | | D |
| 2561 | 58 | 100% Cotton | S | RR | | L |
| 2754 | 50 | 100% Polyester | S | NRR | 13.25 x 12 | F |
| 2755 | 50 | 100% Polyester | S | NRR | 13.25 x 12 | F |
| 2798 | 50 | 100% Polyester | W | RR | 12.52 x 14.17 | G |
| 2805 | 66 | 65% Cotton, 35% Polyester | S | NRR | 13.25 | L |
| 2807 | 66 | 69% Cotton, 31% Polyester | S | NRR | 13.25 | L |
| 2808 | 66 | 69% Cotton, 31% Polyester | S | NRR | 13.25 | L |

Hallagan Fabric Reference Guide

9.17.2024

| HMC # | GR | CONTENT | CLEANING CODE | RR/NRR | REPEAT H x V | Wall Rack Location |
|-------|----|--|---------------|--------|--------------|--------------------|
| 2863 | 58 | 100% Cotton | S | RR | | L |
| 2867 | 58 | 100% Cotton | S | RR | | L |
| 2869 | 58 | 100% Cotton | S | RR | | L |
| 2872 | 58 | 100% Cotton | S | RR | | L |
| 2879 | 58 | 100% Cotton | S | RR | | L |
| 2924 | 54 | 65% Polyester, 35% Linen | S | RR | 14 x 13.5 | F |
| 2928 | 54 | 65% Polyester, 35% Linen | S | RR | 14 x 13.5 | F |
| 2954 | 30 | 85% Polyester 15% Acrylic | W | RR | | C |
| 2957 | 30 | 85% Polyester 15% Acrylic | W | RR | | D |
| 2970 | 30 | 100% Polyester | S | RR | | E |
| 2972 | 30 | 100% Polyester | S | RR | | B |
| 2977 | 30 | 100% Polyester | S | RR | | D |
| 2978 | 30 | 100% Polyester | S | RR | | B |
| 2979 | 30 | 100% Polyester | S | RR | | D |
| 2982 | 30 | 100% Polyester | S | RR | | D |
| 2987 | 30 | 100% Polyester | S | RR | | D |
| 2992 | 30 | 100% Polyester | S | RR | | B |
| 2994 | 30 | 100% Polyester | S | RR | | C |
| 2995 | 30 | 100% Polyester | S | RR | | D |
| 2997 | 30 | 100% Polyester | S | RR | | D |
| 2998 | 30 | 100% Polyester | S | RR | | A |
| 3043 | 30 | 100% Polyester | W | RR | | A |
| 3048 | 30 | 100% Polyester | W | RR | | A |
| 3141 | 34 | 100% Polyester | S | RR | | C |
| 3144 | 34 | 100% Polyester | S | RR | | D |
| 3145 | 34 | 100% Polyester | S | RR | | D |
| 3146 | 34 | 100% Polyester | S | RR | | C |
| 3165 | 30 | 100% Polyester | W | NRR | | E |
| 3167 | 30 | 100% Polyester | W | NRR | | D |
| 3173 | 38 | 100% Polyester | S | RR | | A |
| 3273 | 38 | 100% Polyester | W | RR | | A |
| 3323 | 34 | 100% Polyester | W | RR | | A |
| 3394 | 34 | 100% Polyester | WS | RR | | C |
| 3397 | 34 | 100% Polyester | WS | RR | | D |
| 3399 | 34 | 100% Polyester | WS | RR | | D |
| 3432 | 34 | 61% Polypropylene, 39% Polyester | S | RR | | D |
| 3433 | 34 | 61% Polypropylene, 39% Polyester | S | RR | | A |
| 3437 | 34 | 61% Polypropylene, 39% Polyester | S | RR | | D |
| 3502 | 38 | 100% Polyester | S | RR | | D |
| 3507 | 38 | 100% Polyester | S | RR | | D |
| 3508 | 38 | 100% Polyester | S | RR | | A |
| 3563 | 42 | 87% Polyester, 13% Acrylic | W | RR | 8 x 14 | G |
| 3569 | 42 | 87% Polyester, 13% Acrylic | W | RR | 8 x 14 | G |
| 3664 | 34 | 90% Polyester, 7% Nylon, 3% Spandex | S | NRR | | C |
| 3668 | 34 | 90% Polyester, 7% Nylon, 3% Spandex | S | NRR | | B |
| 3669 | 34 | 90% Polyester, 7% Nylon, 3% Spandex | S | NRR | | D |
| 3713 | 42 | 100% Polyester | S | RR | | A |
| 3770 | 38 | 100% Polyester | S | RR | | E |
| 3772 | 38 | 100% Polyester | S | RR | | B |
| 3773 | 38 | 100% Polyester | S | RR | | A |
| 3774 | 38 | 100% Polyester | S | RR | | C |
| 3777 | 38 | 100% Polyester | S | RR | | D |
| 3789 | 50 | 100% Polyester | S | RR | 14 x 20 | H |
| 3801 | 38 | 53% Cotton, 25% Polyester, 22% Acrylic | S | RR | | K |

Hallagan Fabric Reference Guide

9.17.2024

| HMC # | GR | CONTENT | CLEANING CODE | RR/NRR | REPEAT H x V | Wall Rack Location |
|-------|----|--------------------------------------|---------------|--------|---------------|--------------------|
| 3862 | 42 | 54% Acrylic, 46% Polyester | S | RR | | B |
| 3863 | 42 | 54% Acrylic, 46% Polyester | S | RR | | A |
| 3897 | 38 | 5% Rayon, 5% Cotton | W | RR | 0 x 4.5 | K |
| 3907 | 38 | 75% Rayon, 25% Polyester | S | RR | | D |
| 3928 | 42 | 100% Polyester | S | RR | | D |
| 3935 | 38 | 70% Polypropylene 30% Polyester | WS | RR | 14.25x27 | K |
| 3937 | 38 | 70% Polypropylene 30% Polyester | WS | RR | 14.25x27 | K |
| 3939 | 38 | 70% Polypropylene 30% Polyester | WS | RR | 14.25x27 | K |
| 3983 | 38 | 100% Polyester | W | RR | 3.15 x 2.68 | J |
| 3988 | 38 | 100% Polyester | W | RR | 3.15 x 2.68 | J |
| 3994 | 38 | 83% Polyester, 10% Acrylic, 7% Linen | W | NRR | 26.10x26.38 | F |
| 3996 | 38 | 83% Polyester, 10% Acrylic, 7% Linen | W | NRR | 26.10x26.38 | F |
| 4028 | 50 | 45% Polyester, 55% Acrylic | S | NRR | 2.5 x - | K |
| 4041 | 34 | 59% Polyester, 41% Acrylic | W | RR | 1.5 x 1.5 | D |
| 4043 | 34 | 59% Polyester, 41% Acrylic | W | RR | 1.5 x 1.5 | A |
| 4046 | 34 | 59% Polyester, 41% Acrylic | W | RR | 1.5 x 1.5 | D |
| 4047 | 34 | 59% Polyester, 41% Acrylic | W | RR | 1.5 x 1.5 | D |
| 4048 | 34 | 59% Polyester, 41% Acrylic | W | RR | 1.5 x 1.5 | B |
| 4063 | 58 | 100% Polyester | S | NRR | 27 x 27 | F |
| 4066 | 58 | 100% Polyester | S | NRR | 27 x 27 | F |
| 4097 | 32 | 5% Olefin | S | RR | | D |
| 4113 | 50 | 100% Polyester | S | RR | 14 x 14.5 | F |
| 4125 | 46 | 64% Polyester, 36% Viscose | W | RR | | D |
| 4129 | 46 | 64% Polyester, 36% Viscose | W | RR | | D |
| 4147 | 34 | 86% Polyester, 14% Cotton | WS | RR | | K |
| 4149 | 34 | 86% Polyester, 14% Cotton | WS | RR | 12.5 | K |
| 4152 | 58 | 87% Polyester, 13% Rayon | S | NRR | 9.5 x 5.25 | G |
| 4157 | 58 | 87% Polyester, 13% Rayon | S | NRR | 9.5 x 5.25 | G |
| 4163 | 34 | 100% Polyester | S | RR | | A |
| 4168 | 34 | 100% Polyester | S | RR | | A |
| 4169 | 34 | 100% Polyester | S | RR | | B |
| 4179 | 38 | 100% Polyester | S | RR | | D |
| 4183 | 34 | 65% Polypropylene 35% Polyester | WS | RR | | D |
| 4185 | 34 | 65% Polypropylene 35% Polyester | WS | RR | | D |
| 4188 | 34 | 65% Polypropylene 35% Polyester | WS | RR | | B |
| 4193 | 46 | 91% Polyester, 9% Cotton | S | RR | | B |
| 4194 | 46 | 91% Polyester, 9% Cotton | S | RR | | C |
| 4199 | 46 | 91% Polyester, 9% Cotton | S | RR | | D |
| 4246 | 32 | 64% Olefin, 33% Polyester, 3% Cotton | W | RR | | C |
| 4257 | 54 | 100% Polyester | WS | RR | 14.37 x 14.12 | D |
| 4273 | 42 | 100% Polyester | S | RR | 4.88 x 4.50 | A |
| 4274 | 42 | 100% Polyester | S | RR | 4.88 x 4.50 | C |
| 4277 | 42 | 100% Polyester | S | RR | 4.88 x 4.50 | D |
| 4327 | 42 | 75% Cotton, 25% Linen | S | NRR | 27.13x24.75 | F |
| 4343 | 42 | 100% Cotton | S | NRR | 25.25 x 13.5 | F |
| 4345 | 42 | 100% Cotton | S | NRR | 25.25 x 13.5 | F |
| 4347 | 42 | 100% Cotton | S | NRR | 25.25 x 13.5 | F |
| 4367 | 38 | 100% Olefin | WS | RR | | G |
| 4369 | 38 | 100% Olefin | WS | RR | | G |
| 4384 | 42 | 87% Polyester, 13% Cotton | S | RR | 13 1/2 x 9 | H |
| 4393 | 42 | 100% Polyester | S | RR | 1.75 x 2.25 | A |

Hallagan Fabric Reference Guide

9.17.2024

| HMC # | GR | CONTENT | CLEANING CODE | RR/ NRR | REPEAT H x V | Wall Rack Location |
|-------|----|--|---------------|------------|-----------------|--------------------------|
| 4415 | 34 | 100% Cotton | S | NRR | 6.75 x 13.75 | F |
| 4417 | 34 | 100% Cotton | S | NRR | 6.75 x 13.75 | F |
| 4469 | 42 | 82% Polyester, 18% Cotton | S | RR | 15.25x14.75 | G |
| 4507 | 38 | 95% Polyester, 5% Acrylic | W | RR | .75" x .75" | G |
| 4509 | 38 | 95% Polyester, 5% Acrylic | W | RR | .75" x .75" | G |
| 4515 | 46 | 100% Polyester | W | RR | 14.3 x 14 | G |
| 4543 | 46 | 75% Cotton, 25% Linen | S | NRR | 27 x 25.25 | F |
| 4544 | 46 | 75% Cotton, 25% Linen | S | NRR | 27 x 25.25 | F |
| 4547 | 46 | 75% Cotton, 25% Linen | S | NRR | 27 x 25.25 | F |
| 4557 | 54 | 90% Polyester, 10% Acrylic | W | RR | 7" x 5" | G |
| 4559 | 54 | 90% Polyester, 10% Acrylic | W | RR | 7" x 5" | G |
| 4573 | 42 | 100% Polyester | WS | RR | | A |
| 4574 | 42 | 100% Polyester | WS | RR | | C |
| 4585 | 42 | 80% Polyester, 20% Viscose | W | RR | | E |
| 4589 | 42 | 80% Polyester, 20% Viscose | W | RR | | D |
| 4593 | 58 | 100% Polyester | S | NRR | 28.5 x 28.5 | F |
| 4597 | 58 | 100% Polyester | S | NRR | 28.5 x 28.5 | F |
| 4598 | 58 | 100% Polyester | S | NRR | 28.5 x 28.5 | F |
| 4599 | 58 | 100% Polyester | S | NRR | 28.5 x 28.5 | F |
| 4663 | 46 | 57% Polyester, 30% Olefin, 13% Linen | S | RR | 27 x 16 | G |
| 4667 | 46 | 57% Polyester, 30% Olefin, 13% Linen | S | RR | 27 x 16 | G |
| 4669 | 46 | 57% Polyester, 30% Olefin, 13% Linen | S | RR | 27 x 16 | G |
| 4712 | 28 | 49% Cotton, 32% Polyester, 19% Olefin | S | RR | | J |
| 4717 | 28 | 49% Cotton, 32% Polyester, 19% Olefin | S | RR | | J |
| 4722 | 58 | 100% Polyester | S | NRR | 5.75 x 2 | F |
| 4723 | 58 | 100% Polyester | S | NRR | 5.75 x 2 | F |
| 4727 | 58 | 100% Polyester | S | NRR | 5.75 x 2 | F |
| 4729 | 58 | 100% Polyester | S | NRR | 5.75 x 2 | F |
| 4881 | 48 | 100% Cotton | S | NRR | | F |
| 4882 | 48 | 100% Cotton | S | NRR | | F |
| 4902 | 46 | 100% Polyester | S | NRR | 14.75 x 14 | F |
| 4909 | 46 | 100% Polyester | S | NRR | 14.75 x 14 | F |
| 4924 | 46 | 100% Polyester | S | NRR | 27 x 25.25 | F |
| 4927 | 46 | 100% Polyester | S | NRR | 27 x 25.25 | F |
| 4932 | 42 | 52% Viscose, 15% Cotton, 15% Linen, 18% Polyester | WS | RR | | A |
| 4933 | 42 | 52% Viscose, 15% Cotton, 15% Linen, 18% Polyester | WS | RR | | D |
| 4939 | 42 | 52% Viscose, 15% Cotton, 15% Linen, 18% Polyester | WS | RR | | D |
| 4943 | 42 | 52% Viscose, 15% Cotton, 15% Linen, 18% Polyester | WS | RR | | A |
| 4949 | 42 | 18% Polyester | WS | RR | | D |
| 4965 | 30 | 100% Polyester | S | RR | | E |
| 4967 | 30 | 100% Polyester | S | RR | | D |
| 4968 | 30 | 100% Polyester | S | RR | | B |
| 4973 | 50 | 100% Polyester | WS | RR | 7.5 X 6.75 | J |
| 4978 | 50 | 100% Polyester | WS | RR | 7.5 X 6.75 | J |
| 5057 | 62 | 100% Cotton | S | RR | | L |
| 5058 | 62 | 100% Cotton | S | RR | | L |
| 5061 | 62 | 100% Cotton | S | RR | 14 7/8 x 13 1/4 | L |
| 5067 | 62 | 100% Cotton | S | RR | 14 7/8 x 13 1/4 | L |

Hallagan Fabric Reference Guide

9.17.2024

| HMC # | GR | CONTENT | CLEANING CODE | RR/ NRR | REPEAT H x V | Wall Rack Location |
|-------|----|---------------------------------------|---------------|------------|-----------------|--------------------------|
| 5069 | 62 | 100% Cotton | S | RR | 12 3/4 X 13 3/4 | L |
| 5071 | 34 | 73% Polyester, 27% Cotton | S | RR | 23.25 x 29 | F |
| 5077 | 34 | 73% Polyester, 27% Cotton | S | RR | 23.25 x 29 | F |
| 5124 | 30 | 64% Olefin, 36% Polyester | WS | RR | | C |
| 5147 | 50 | 100% Polyester | WS | RR | 5.88 x 5.06 | K |
| 5148 | 50 | 100% Polyester | WS | RR | 5.88 x 5.06 | K |
| 5149 | 50 | 100% Polyester | WS | RR | 5.88 x 5.06 | K |
| 5191 | 62 | 100% Cotton | S | RR | 6.5 x 6.62 | L |
| 5199 | 62 | 100% Cotton | S | RR | 6.5 x 6.62 | L |
| 5269 | 54 | 100% Cotton | S | RR | 14 1/4X14 3/4 | L |
| 5274 | 42 | 55% Linen, 45% Rayon | WS | RR | 17 x 13.5 | F |
| 5333 | 42 | 86% Polyester, 14% Acrylic | W | RR | | A |
| 5338 | 42 | 86% Polyester, 14% Acrylic | W | RR | | A |
| 5339 | 42 | 86% Polyester, 14% Acrylic | W | RR | | D |
| 5359 | 50 | 84% Cotton, 16% Polyester | S | NRR | 1 x 0 | K |
| 5467 | 34 | 95% Cotton, 5% Linen | S | NRR | 13.5 x 9 | F |
| 5497 | 62 | 100% Cotton | S | RR | 6.5 x 6.62 | L |
| 5499 | 62 | 100% Cotton | S | RR | 6.5 x 6.62 | L |
| 5582 | 42 | 100% Polyester | S | RR | 2 x .38 | B |
| 5583 | 42 | 100% Polyester | S | RR | 2 x .38 | A |
| 5589 | 42 | 100% Polyester | S | RR | 2 x .38 | D |
| 5648 | 50 | 61% Cotton, 39% Polyester | W | RR | .4 x .4 | G |
| 5665 | 28 | 100% Cotton | S | RR | | J |
| 5703 | 38 | 100% Polyester | S | RR | 1 x 7/8 | G |
| 5707 | 38 | 100% Polyester | S | RR | 1 x 7/8 | G |
| 5709 | 38 | 100% Polyester | S | RR | 1 x 7/8 | G |
| 5714 | 50 | 92% Polyester 8% Rayon | S | RR | 2.75 x 2.75 | G |
| 5715 | 50 | 92% Polyester, 8 % Rayon | S | RR | 2.75 x 2.75 | G |
| 5717 | 50 | 92% Polyester, 8 % Rayon | S | RR | 2.75 x 2.75 | G |
| 5737 | 50 | 41% Polyester,38% Olefin, 21% Cotton | WS | RR | 13.875x13.5 | G |
| 5740 | 54 | 100% Polyester | S | NRR | 7 x 7.5 | G |
| 5747 | 54 | 100% Polyester | S | NRR | 7 x 7.5 | G |
| 5749 | 54 | 100% Polyester | S | NRR | 7 x 7.5 | G |
| 5769 | 46 | 35% Polyester 34% Rayon 31% Cotton | S | RR | 9 3/8 x 9 3/8 | G |
| 5787 | 58 | 100% Polyester | S | NRR | 14 x 19.75 | F |
| 5795 | 58 | 60% Acrylic, 40% Polyester | S | RR | | C |
| 5797 | 58 | 60% Acrylic, 40% Polyester | S | RR | | D |
| 5798 | 58 | 60% Acrylic, 40% Polyester | S | RR | | B |
| 5799 | 58 | 60% Acrylic, 40% Polyester | S | RR | | B |
| 5841 | 28 | 49% Cotton, 32% Polyester, 19% Olefin | S | RR | | I |
| 5849 | 28 | 49% Cotton, 32% Polyester, 19% Olefin | S | RR | | J |
| 5901 | 58 | 100% Polyester | S | NRR | 14.25x27.25 | G |
| 5906 | 58 | 100% Polyester | S | NRR | 14.25x27.25 | G |
| 5907 | 58 | 100% Polyester | S | NRR | 14.25x27.25 | G |
| 5913 | 58 | 92% Polyester, 8% Linen | S | NRR | 13.5 x 13.5 | F |
| 5914 | 58 | 92% Polyester, 8% Linen | S | NRR | 13.5 x 13.5 | F |
| 5919 | 58 | 92% Polyester, 8% Linen | S | NRR | 13.5 x 13.5 | F |
| 6002 | 34 | 69% Polyester, 31% Cotton | S | RR | | D |
| 6003 | 34 | 69% Polyester, 31% Cotton | S | RR | | A |
| 6004 | 34 | 69% Polyester, 31% Cotton | S | RR | | C |
| 6005 | 34 | 69% Polyester, 31% Cotton | S | RR | | D |
| 6007 | 34 | 69% Polyester, 31% Cotton | S | RR | | D |
| 6008 | 34 | 69% Polyester, 31% Cotton | S | RR | | B |

Hallagan Fabric Reference Guide

9.17.2024

| HMC # | GR | CONTENT | CLEANING CODE | RR/NRR | REPEAT H x V | Wall Rack Location |
|-------|----|----------------------------------|---------------|--------|---------------|--------------------|
| 6009 | 34 | 69% Polyester, 31% Cotton | S | RR | | D |
| 6025 | 30 | 100% Cotton | S | RR | | E |
| 6090 | 62 | 100% Cotton | S | RR | 1 1/2 X 1 3/4 | L |
| 6099 | 62 | 100% Cotton | S | RR | 1 1/2 X 1 3/4 | L |
| 6111 | 30 | 51%Olefin, 49% Polyester | WS | RR | | C |
| 6115 | 30 | 51%Olefin, 49% Polyester | WS | RR | | D |
| 6141 | 30 | 100% Polyester | W | RR | | C |
| 6145 | 30 | 100% Polyester | W | RR | | D |
| 6147 | 30 | 100% Polyester | W | RR | | D |
| 6148 | 30 | 100% Polyester | W | RR | | B |
| 6167 | 42 | 100% Polyester | S | RR | | D |
| 6169 | 42 | 100% Polyester | S | RR | | D |
| 6184 | 62 | 91% Polyester, 9% Linen | S | NRR | 27.5 x 27.25 | F |
| 6185 | 62 | 91% Polyester, 9% Linen | S | NRR | 27.5 x 27.25 | F |
| 6294 | 62 | 100% Polyester | S | RR | 28.5x28 | F |
| 6295 | 62 | 100% Polyester | S | RR | 28.5x28 | F |
| 6297 | 62 | 100% Polyester | S | RR | 28.5x28 | F |
| 6305 | 40 | 75% Cotton, 25% Linen | W | RR | 27 x 24.75 | F |
| 6317 | 66 | 100% Polyester | W | RR | 15.5 x 14 | H |
| 6322 | 30 | 76% Olefin, 24% Polyester | WS | RR | | D |
| 6323 | 30 | 76% Olefin, 24% Polyester | WS | RR | | B |
| 6325 | 30 | 76% Olefin, 24% Polyester | WS | RR | | D |
| 6327 | 30 | 76% Olefin, 24% Polyester | WS | RR | | D |
| 6334 | 46 | 90% Polyester, 10% Linen | S | NRR | 27.25x27.25 | F |
| 6337 | 46 | 90% Polyester, 10% Linen | S | NRR | 27.25x27.25 | F |
| 6339 | 46 | 90% Polyester, 10% Linen | S | NRR | 27.25x27.25 | F |
| 6373 | 52 | 84% Polypropylene, 16% Polyester | WS | RR | 13.64 x 11.64 | G |
| 6374 | 52 | 84% Polypropylene, 16% Polyester | WS | RR | 13.64 x 11.64 | G |
| 6393 | 50 | 100% Polyester | W | NRR | | A |
| 6398 | 50 | 100% Polyester | W | NRR | | B |
| 6402 | 34 | 100% Cotton | S | RR | | I |
| 6442 | 42 | 52% Polyester, 48% Acrylic | S | RR | | D |
| 6443 | 42 | 52% Polyester, 48% Acrylic | S | RR | | A |
| 6447 | 42 | 52% Polyester, 48% Acrylic | S | RR | | D |
| 6448 | 42 | 52% Polyester, 48% Acrylic | S | RR | | D |
| 6493 | 34 | 100% Cotton | S | NRR | 2.37 x 4.25 | F |
| 6522 | 50 | 100% Polyester | S | NRR | 13.75 x 15.5 | G |
| 6526 | 50 | 100% Polyester | S | NRR | 13.75 x 15.5 | G |
| 6528 | 50 | 100% Polyester | S | NRR | 13.75 x 15.5 | G |
| 6531 | 34 | 90% Polyester, 10% Nylon | S | NRR | | C |
| 6533 | 34 | 90% Polyester, 10% Nylon | S | NRR | | B |
| 6536 | 34 | 90% Polyester, 10% Nylon | S | NRR | | C |
| 6537 | 34 | 90% Polyester, 10% Nylon | S | NRR | | D |
| 6539 | 34 | 90% Polyester, 10% Nylon | S | NRR | | D |
| 6547 | 38 | 82% Polyester, 18% Rayon | S | RR | | D |
| 6548 | 38 | 82% Polyester, 18% Rayon | S | RR | | B |
| 6549 | 38 | 82% Polyester, 18% Rayon | S | RR | | D |
| 6551 | 38 | 82% Polyester, 18% Rayon | S | RR | | C |
| 6552 | 38 | 82% Polyester, 18% Rayon | S | RR | | B |
| 6553 | 38 | 82% Polyester, 18% Rayon | S | RR | | A |
| 6559 | 38 | 82% Polyester, 18% Rayon | S | RR | | D |
| 6586 | 46 | 100% Polyester | S | RR | 13.7 x 11.11 | C |
| 6587 | 46 | 100% Polyester | S | RR | 13.7 x 11.11 | D |
| 6604 | 54 | 73% Polyester 27% Viscose | S | RR | | C |

Hallagan Fabric Reference Guide

9.17.2024

| HMC # | GR | CONTENT | CLEANING CODE | RR/NRR | REPEAT H x V | Wall Rack Location |
|-------|----|--------------------------------------|---------------|--------|-----------------|--------------------|
| 6607 | 54 | 73% Polyester, 27% Viscose | S | RR | | D |
| 6612 | 54 | 73% Polyester, 27% Viscose | S | RR | | B |
| 6613 | 54 | 73% Polyester, 27% Viscose | S | RR | | A |
| 6614 | 54 | 73% Polyester, 27% Viscose | S | RR | | C |
| 6615 | 54 | 73% Polyester, 27% Viscose | S | RR | | E |
| 6617 | 54 | 73% Polyester, 27% Viscose | S | RR | | D |
| 6619 | 54 | 73% Polyester, 27% Viscose | S | RR | | D |
| 6661 | 46 | 57% Rayon, 43% Polyester | S | RR | | K |
| 6738 | 46 | 100% Polyester | S | RR | 13.5 x 19 | G |
| 6787 | 50 | 56% Polyester, 32% Cotton, 12% Rayon | S | NRR | 14 x 26 | G |
| 6829 | 28 | 100% Polyester | S | RR | 1 1/2" x 1" | D |
| 6977 | 46 | 100% Polyester | S | RR | 13.5 x 0 | K |
| 6987 | 38 | 84% Polyester, 7% Linen,9% Acrylic | W | RR | 9 X 13 | G |
| 6989 | 38 | 84% Polyester, 7% Linen,9% Acrylic | W | RR | 9 X 13 | G |
| 6999 | 38 | 100% Polyester | W | NRR | 3.15 x 2.68 | J |
| 7010 | 58 | 82% Rayon, 16% Polyester, 2% Nylon | S | RR | 2.75 x 2.75 | E |
| 7012 | 58 | 82% Rayon, 16% Polyester, 2% Nylon | S | RR | 2.75 x 2.75 | B |
| 7015 | 58 | 82% Rayon, 16% Polyester, 2% Nylon | S | RR | 2.75 x 2.75 | E |
| 7017 | 58 | 82% Rayon, 16% Polyester, 2% Nylon | S | RR | 2.75 x 2.75 | D |
| 7314 | 50 | 100% Polyester | S | RR | 1.5 x 1.5 | G |
| 7319 | 50 | 100% Polyester | S | RR | 1.5 x 1.5 | G |
| 7382 | 34 | 100% Polyester | S | RR | | B |
| 7419 | 34 | 60% Cotton, 40% Polyester | W | RR | 6.5 x 7 | J |
| 7482 | 34 | 100% Polyester | S | RR | | D |
| 7483 | 34 | 100% Polyester | S | RR | | A |
| 7484 | 34 | 100% Polyester | S | RR | | C |
| 7487 | 34 | 100% Polyester | S | RR | | D |
| 7489 | 34 | 100% Polyester | S | RR | | D |
| 7510 | 46 | 85% Cotton 15% linen | S | NRR | 13.5 x 12.6 | F |
| 7511 | 46 | 85% Cotton 15% linen | S | NRR | 13.5 x 12.6 | F |
| 7513 | 46 | 85% Cotton 15% linen | S | NRR | 13.5 x 12.6 | F |
| 7517 | 46 | 85% Cotton 15% linen | S | NRR | 13.5 x 12.6 | F |
| 7527 | 38 | 100% Polyester | S | RR | 17.5 x 28 | D |
| 7528 | 38 | 100% Polyester | S | RR | 17.5 x 28 | A |
| 7541 | 30 | 92% Polyester, 8% Nylon | S | NRR | | C |
| 7543 | 30 | 92% Polyester, 8% Nylon | S | NRR | | B |
| 7545 | 30 | 92% Polyester, 8% Nylon | S | NRR | | E |
| 7547 | 30 | 92% Polyester, 8% Nylon | S | NRR | | D |
| 7555 | 46 | 72% Polyester 28% Rayon | S | RR | 14 1/2 x 14 3/8 | F |
| 7637 | 30 | 84% Polyester, 16% Rayon | W | RR | | D |
| 7782 | 46 | 63% Polyester, 26% Cotton, 11% Rayon | S | RR | 13 1/2 x 14 | H |
| 7783 | 46 | 63% Polyester, 26% Cotton, 11% Rayon | S | RR | 13 1/2 x 14 | H |
| 7788 | 46 | 63% Polyester, 26% Cotton, 11% Rayon | S | RR | 13 1/2 x 14 | H |
| 7793 | 48 | 83% Polyester, 17% Cotton | S | RR | | A |
| 7849 | 42 | 78% Polyester, 22% Viscose | S | RR | | D |
| 7917 | 42 | 100% Polyester | W | RR | 30 x 28 | G |
| 7919 | 42 | 100% Polyester | W | RR | 30 x 28 | G |
| 7962 | 42 | 100% Polyester | W | RR | 25 x 14.25 | G |
| 7969 | 42 | 100% Polyester | W | RR | 25 x 14.25 | G |
| 8020 | 34 | 100% Polyester | S | RR | | D |
| 8023 | 34 | 100% Polyester | S | RR | | A |
| 8029 | 34 | 100% Polyester | S | RR | | D |
| 8110 | 30 | 80% Polyester, 20% Acrylic | WS | RR | | E |

Hallagan Fabric Reference Guide

9.17.2024

| HMC # | GR | CONTENT | CLEANING CODE | RR/ NRR | REPEAT H x V | Wall Rack Location |
|-------|----|----------------------------|---------------|------------|-----------------|--------------------------|
| 8114 | 30 | 80% Polyester, 20% Acrylic | WS | RR | | C |
| 8115 | 30 | 80% Polyester, 20% Acrylic | WS | RR | | E |
| 8117 | 30 | 80% Polyester, 20% Acrylic | WS | RR | | D |
| 8172 | 46 | 95% Polyester, 5% Linen | S | NRR | 13.5 x 13.5 | F |
| 8176 | 42 | 95% Polyester, 5% Linen | S | NRR | 13.5 x 13.5 | F |
| 8186 | 42 | 100% Polyester | S | NRR | 4.5 x 2 | F |
| 8315 | 32 | 100% Polyester | W | RR | 9 x 9 | J |
| 8317 | 32 | 100% Polyester | W | RR | 9 x 9 | J |
| 8319 | 32 | 100% Polyester | W | RR | 9 x 9 | J |
| 8385 | 46 | 100% Polyester | S | NRR | 16.5 x 14.5 | G |
| 8408 | 36 | 64% Cotton, 36% Polyester | S | RR | | J |
| 8501 | 62 | 55% Linen, 45% Viscose | S | NRR | 27 x 27 | F |
| 8507 | 62 | 55% Linen, 45% Viscose | S | NRR | 27 x 27 | F |
| 8541 | 38 | 100% Polyester | S | RR | | C |
| 8547 | 38 | 100% Polyester | S | RR | | D |
| 8548 | 38 | 100% Polyester | S | RR | | B |
| 8549 | 38 | 100% Polyester | S | RR | | D |
| 8553 | 42 | 100% Polyester | WS | RR | | A |
| 8601 | 66 | 69% Cotton, 31% Polyester | S | NRR | | L |
| 8837 | 28 | 100% Cotton | S | RR | 27" x | K |
| 8880 | 28 | 79% Polyester, 21% PU | W | RR | | B |
| 8882 | 28 | 79% Polyester, 21% PU | W | RR | | B |
| 8883 | 28 | 79% Polyester, 21% PU | W | RR | | B |
| 8888 | 28 | 79% Polyester, 21% PU | W | RR | | B |
| 8889 | 28 | 79% Polyester, 21% PU | W | RR | | D |
| 8978 | 44 | 87% Cotton 13% Rayon | S | RR | 9 x 5 | F |
| 9037 | 30 | 100% Cotton | W | NRR | 1 x 1.5 | F |
| 9038 | 30 | 100% Cotton | W | NRR | 1 x 1.5 | F |
| 9080 | 34 | 90% Polyester, 10% Nylon | S | NRR | | E |
| 9081 | 34 | 90% Polyester, 10% Nylon | S | NRR | | C |
| 9082 | 34 | 90% Polyester, 10% Nylon | S | NRR | | B |
| 9083 | 34 | 90% Polyester, 10% Nylon | S | NRR | | A |
| 9085 | 34 | 90% Polyester, 10% Nylon | S | NRR | | D |
| 9087 | 34 | 90% Polyester, 10% Nylon | S | NRR | | D |
| 9088 | 34 | 90% Polyester, 10% Nylon | S | NRR | | D |
| 9092 | 34 | 90% Polyester, 10% Nylon | S | NRR | | B |
| 9435 | 66 | 83% Polyester, 17% Rayon | S | NRR | 3.5 x 4.25 | G |
| 9437 | 66 | 83% Polyester, 17% Rayon | S | NRR | 3.5 x 4.25 | G |
| 9438 | 66 | 83% Polyester, 17% Rayon | S | NRR | 3.5 x 4.25 | G |
| 9547 | 50 | 100% Polyester | S | RR | 14.5 x 14.5 | G |
| 9701 | 38 | 70% Polyester, 30% Cotton | S | RR | 3.5 X 3.75 | G |
| 9703 | 38 | 70% Polyester, 30% Cotton | S | RR | 3.5 X 3.75 | G |
| 9707 | 38 | 70% Polyester, 30% Cotton | S | RR | 3.5 X 3.75 | G |
| 9810 | 28 | 100% Polyester | W | RR | | A |
| 9819 | 28 | 100% Polyester | W | RR | | D |
| 9884 | 38 | 100% Cotton | S | RR | 6.8 x 7.75 | I |
| C1001 | 42 | 100% Polyester | WS | RR | | P |
| C1004 | 42 | 100% Polyester | WS | RR | | P |
| C3001 | 42 | 100% Polyester | WS | RR | | P |
| C3002 | 42 | 100% Polyester | WS | RR | | P |
| C3003 | 42 | 100% Polyester | WS | RR | | P |
| C3005 | 42 | 100% Polyester | WSC | RR | | P |
| C3007 | 42 | 100% Polyester | WSC | RR | | P |

Hallagan Fabric Reference Guide

9.17.2024

| HMC # | GR | CONTENT | CLEANING CODE | RR/NRR | REPEAT H x V | Wall Rack Location |
|--------|----|---------------------------|---------------|--------|--------------|--------------------|
| C3009 | 42 | 100% Polyester | WSC | RR | | P |
| C3103 | 38 | 92% Polyester, 8% Linen | CW | RR | | A |
| C3723 | 58 | 100% Polyester | CW | RR | 1.88 x 2.25 | A |
| C3727 | 58 | 100% Polyester | CW | RR | 1.88 x 2.25 | D |
| C4100 | 38 | 100% Polyester | CW | RR | | E |
| C4103 | 38 | 100% Polyester | CW | RR | | A |
| C4107 | 38 | 100% Polyester | CW | RR | | D |
| C5001 | 42 | 82% Polyester, 18% Rayon | WS | RR | | P |
| C5006 | 42 | 82% Polyester, 18% Rayon | WS | RR | | P |
| C5103 | 54 | Acrylic, 5% Linen | CW | RR | | A |
| C5109 | 54 | Acrylic, 5% Linen | CW | RR | | A |
| C7143 | 46 | 100% Polyester | CW | RR | | A |
| C7148 | 46 | 100% Polyester | CW | RR | | A |
| C8132 | 42 | 100% Polyester | WSC | RR | | P |
| C8136 | 42 | 100% Polyester | WS | RR | | P |
| C8138 | 42 | 100% Polyester | WS | RR | | P |
| C9143 | 38 | 100% Polyester | WSC | RR | | P |
| C9148 | 38 | 100% Polyester | WSC | RR | | P |
| C9149 | 38 | 100% Polyester | WSC | RR | | P |
| C9159 | 38 | 100% Polyester | WSC | RR | | P |
| C9163 | 42 | 54% Olefin, 46% Polyester | WS | RR | | P |
| C9164 | 42 | 54% Olefin, 46% Polyester | WS | RR | | P |
| C9165 | 42 | 54% Olefin, 46% Polyester | WS | RR | | P |
| C9167 | 42 | 54%Olefin 46% Polyester | WS | RR | | P |
| C9168 | 42 | 54% Olefin, 46% Polyester | WS | RR | | P |
| C9169 | 42 | 54%Olefin 46% Polyester | WS | RR | | P |
| C9203 | 46 | 100% Polyester | WS | RR | | P |
| IN7107 | B | 100% Polyester | WSB | NRR | 2.4 x 16.2 | G |
| IN7108 | B | 100% Polyester | WSB | NRR | 2.4 x 16.2 | G |
| IN7109 | B | 100% Polyester | WSB | NRR | 2.4 x 16.2 | G |
| IN7329 | 62 | 95% Polyester 5% Olefin | WSB | RR | 1 X 1 | P |
| IN7519 | 54 | 96% Polyester 4% Olefin | WSB | RR | | P |
| IN7718 | A | 86% Polyester 14% Olefin | WSB | RR | 0 x 4.5 | K |
| IN7719 | A | 86% Polyester 14% Olefin | WSB | RR | 0 x 4.5 | K |
| IN7923 | 66 | 100% Polyester | WSB | RR | | P |
| IN7927 | 66 | 100% Polyester | WSB | RR | | P |
| IN7929 | 66 | 100% Polyester | WSB | RR | | P |
| R8100 | 34 | 100% Olefin | WSB | RR | | P |
| R8102 | 34 | 100% Olefin | WSB | RR | | P |
| R8103 | 34 | 100% Olefin | WSB | RR | | P |
| R8107 | 34 | 100% Olefin | WSB | RR | | P |
| R8108 | 34 | 100% Olefin | WSB | RR | | P |
| R8109 | 34 | 100% Olefin | WSB | RR | | P |
| R8112 | 34 | 100% Olefin | WSB | RR | | P |
| R8113 | 34 | 100% Olefin | WSB | RR | | P |
| R8117 | 34 | 100% Olefin | WSB | RR | | P |
| R8119 | 34 | 100% Olefin | WSB | RR | | P |
| R8122 | 38 | 100% Olefin | WSB | RR | | P |
| R8127 | 38 | 100% Olefin | WSB | RR | | P |
| R8129 | 38 | 100% Olefin | WSB | RR | | P |
| R8137 | 34 | 100% Olefin | WS | RR | | P |
| R8139 | 34 | 100% Olefin | WS | RR | | P |
| R8149 | 34 | 100% Olefin | WS | RR | | P |

Hallagan Fabric Reference Guide

9.17.2024

| HMC # | GR | CONTENT | CLEANING CODE | RR/NRR | REPEAT H x V | Wall Rack Location |
|-------|----|----------------------------------|---------------|--------|---------------|--------------------|
| R8202 | 30 | 100% Olefin | WSB | RR | 1.5" x .25" | P |
| R8203 | 30 | 100% Olefin | WSB | RR | 1.5" x .25" | P |
| R8204 | 30 | 100% Olefin | WSB | RR | 1.5" x .25" | P |
| R8207 | 30 | 100% Olefin | WSB | RR | 1.5" x .25" | P |
| R8209 | 30 | 100% Olefin | WSB | RR | 1.5" x .25" | P |
| R8342 | 42 | 100% Olefin | WSB | RR | | P |
| R8343 | 42 | 100% Olefin | WSB | RR | | P |
| R8345 | 42 | 100% Olefin | WSB | RR | | P |
| R8347 | 42 | 100% Olefin | WSB | RR | | P |
| R8349 | 42 | 100% Olefin | WSB | RR | | P |
| R8410 | 50 | 91% Olefin 7% Polyester | WSB | RR | | P |
| R8412 | 50 | 91% Olefin 7% Polyester | WSB | RR | | P |
| R8414 | 50 | 91% Olefin 7% Polyester | WSB | RR | | P |
| R8415 | 50 | 91% Olefin 7% Polyester | WSB | RR | | P |
| R8419 | 50 | 91% Olefin 7% Polyester | WSB | RR | | P |
| R8462 | 34 | 99% Polypropylene, 1% Polyester | WSB | RR | | D |
| R8463 | 34 | 99% Polypropylene, 1% Polyester | WSB | RR | | A |
| R8467 | 34 | 99% Polypropylene, 1% Polyester | WSB | RR | | D |
| R8468 | 34 | 99% Polypropylene, 1% Polyester | WSB | RR | | D |
| R8469 | 34 | 99% Polypropylene, 1% Polyester | WSB | RR | | D |
| R8473 | 34 | 99% Polypropylene, 1% Polyester | WSB | RR | | A |
| R8513 | 34 | 100% Olefin | WS | RR | | P |
| R8515 | 34 | 100% Olefin | WS | RR | | P |
| R8517 | 34 | 100% Olefin | WS | RR | | P |
| R8537 | 46 | 100% Polypropylene | WSB | RR | 6.5 x 7 | J |
| R8625 | 34 | 100% Olefin | WSB | RR | | P |
| R8628 | 34 | 100% Olefin | WSB | RR | | P |
| R8629 | 34 | 100% Olefin | WSB | RR | | P |
| R8673 | 58 | 98% Polypropylene, 2% Polyester | WSB | RR | 3.25 x 10.5 | G |
| R8678 | 58 | 98% Polypropylene, 2% Polyester | WSB | RR | 3.25 x 10.5 | G |
| R8679 | 58 | 98% Polypropylene, 2% Polyester | WSB | RR | 3.25 x 10.5 | G |
| R8722 | 42 | 85% Polypropylene, 15% Polyester | WSB | RR | | D |
| R8723 | 42 | 85% Polypropylene, 15% Polyester | WSB | RR | | A |
| R8725 | 42 | 85% Polypropylene, 15% Polyester | WSB | RR | | D |
| R8727 | 42 | 85% Polypropylene, 15% Polyester | WSB | RR | | D |
| R8728 | 42 | 85% Polypropylene, 15% Polyester | WSB | RR | | B |
| R8737 | 62 | 100% Polypropylene | WSB | RR | 12.75 x 13.87 | P |
| R8753 | 58 | 100% Polypropylene | WSB | RR | 4.5 x 4.5 | G |
| R8767 | 38 | 92% Polypropylene, 8% Polyester | WSB | RR | | D |
| R8768 | 38 | 92% Polypropylene, 8% Polyester | WSB | RR | | B |
| R8828 | 50 | 98% Polypropylene, 2% Polyester | WSB | RR | 3.25 x 1.50 | K |
| R8829 | 50 | 98% Polypropylene, 2% Polyester | WSB | RR | 3.25 x 1.50 | K |
| R8840 | 38 | 100% Polypropylene | WSB | RR | | E |
| R8842 | 38 | 100% Polypropylene | WSB | RR | | D |
| R8843 | 38 | 100% Polypropylene | WSB | RR | | A |
| R8847 | 38 | 100% Polypropylene | WSB | RR | | D |
| R8848 | 38 | 100% Polypropylene | WSB | RR | | B |
| R8849 | 38 | 100% Polypropylene | WSB | RR | | D |
| R8852 | 38 | 100% Polypropylene | WSB | RR | | D |
| R8859 | 38 | 100% Polypropylene | WSB | RR | | D |
| R8927 | 38 | 100% Polypropylene | WSB | RR | 5.50 x 0 | K |
| R8928 | 38 | 100% Polypropylene | WSB | RR | 5.50 x 0 | K |
| R8929 | 38 | 100% Polypropylene | WSB | RR | 5.50 x 0 | K |

Hallagan Fabric Reference Guide

9.17.2024

| HMC # | GR | CONTENT | CLEANING CODE | RR/NRR | REPEAT H x V | Wall Rack Location |
|--------|----|---------------------------------|---------------|--------|--------------|--------------------|
| R8944 | 30 | 100% Polypropylene | WSB | RR | | C |
| R8945 | 30 | 100% Polypropylene | WSB | RR | | D |
| R8947 | 30 | 100% Polypropylene | WSB | RR | | D |
| R8948 | 30 | 100% Polypropylene | WSB | RR | | D |
| R8958 | 44 | 99% Polypropylene, 1% Polyester | WSB | RR | | A |
| R8963 | 44 | 99% Polypropylene, 1% Polyester | WSB | RR | | A |
| R8968 | 44 | 99% Polypropylene, 1% Polyester | WSB | RR | | B |
| R8969 | 44 | 99% Polypropylene, 1% Polyester | WSB | RR | | B |
| R9070 | 54 | 100% Polypropylene | WSB | RR | | G |
| R9072 | 54 | 100% Polypropylene | WSB | RR | | G |
| R9077 | 54 | 100% Polypropylene | WSB | RR | | G |
| R9078 | 54 | 100% Polypropylene | WSB | RR | | G |
| R9079 | 54 | 100% Polypropylene | WSB | RR | | G |
| S6672 | 46 | 100% Sunbrella Acrylic | WS | RR | | P |
| S6679 | 46 | 100% Sunbrella Acrylic | WS | RR | | P |
| SN6135 | 30 | 100% Olefin | WS | RR | | P |
| SN6137 | 30 | 100% Olefin | WS | RR | | P |
| SN6138 | 30 | 100% Olefin | WS | RR | | P |
| SN6139 | 30 | 100% Olefin | WS | RR | | P |
| SN6344 | 30 | 100% Olefin | WS | RR | | P |
| SN6348 | 30 | 100% Olefin | WS | RR | | P |
| SN6349 | 30 | 100% Olefin | WS | RR | | P |
| SN6352 | 30 | 98% Olefin, 2% Polyester | WS | RR | | P |
| SN6357 | 30 | 98% Olefin, 2% Polyester | WS | RR | | P |
| SN6564 | 38 | 100% Olefin | WS | RR | | P |
| SN6569 | 38 | 100% Olefin, | WS | RR | | P |
| T3397 | 38 | 100% Polyester | WSB | RR | | P |
| T3399 | 38 | 100% Polyester | WSB | RR | | P |
| T3413 | 50 | 100% Polyester | WSB | RR | 3.365 x 4.5 | I |
| T3418 | 50 | 100% Polyester | WSB | RR | 3.365 x 4.5 | I |